



The OLD NORTH END NEIGHBORHOOD NEWS

P.O. Box 8185, Colorado Springs, CO 80933

Vol. 6, Issue 1 Spring 2013

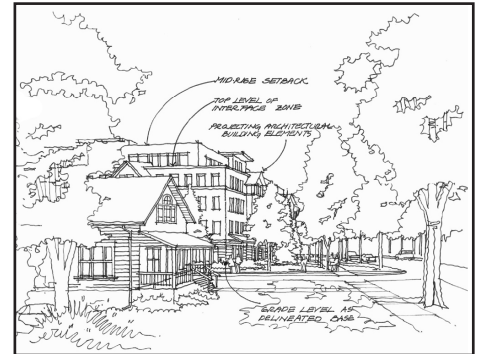
Hospital – ONEN Guidelines Approved

When historic neighborhoods meet modern progress, often the neighborhoods get trampled. Not so with our good neighbor to the north, Penrose Hospital. In 2010, ONEN members expressed concerns to the hospital about the impact of future hospital expansion. After years of planning. The New Penrose Campus – ONEN Interface Guidelines were adopted by the hospital to guide its future expansion. Though no expansion is currently planned, the guidelines now in place will guide the hospital’s Development Plan filed with the city and will be an important part of any future building permit approval process.

The plans addressed:

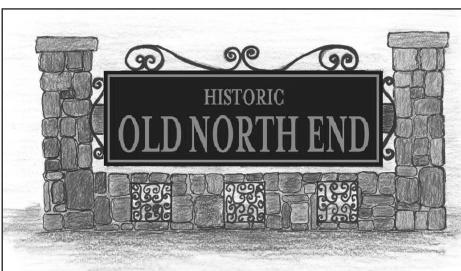
- Street setback
- Specific language regarding signage, lighting and windows
- Limitations on building height
- Architectural features that reinforce the porch-like character of the neighborhood
- Landscaping to continue the pattern typical to the area.

Many thanks to all who worked so diligently on these guidelines to preserve the character of the neighborhood for years to come.



Excerpt from the Penrose Hospital ONEN Interface Guidelines, developed by City planning, hospital staff, RTA Architects and ONEN Board members Matt Railey and Mark Tremmel (co-chairs), and Jennifer Lovell, Samantha Klingenberg, Bob Snow and Dave Munger.

New ONEN Entry Sign



Artist’s rendering of entryway sign for installation at Nevada & Uintah. ONEN board member and artist Susanne Barr designed this sign to complement ONEN street signs. The structure includes stones donated by neighbors and porch grates salvaged from the Stearman House.”

Tax Credits for Home Renovation

In 1990, the State of Colorado began offering a State Income Tax Credit for Historic Preservation. Budget restraints in 2011 led to an abeyance of the credit for two years. This abeyance was recently lifted and the tax credit is again available for projects started in 2013. Projects begun and completed during the abeyance years may be eligible for a tax credit carryover. Applicants for the tax credit are urged to contact the Colorado Office of Archaeology and

Historic Preservation (OAHP) staff as early as possible when considering an application for either federal or state tax credits. OAHP provides advice to property owners, developers and architects concerning appropriate preservation and rehabilitation measures. OAHP staff review applications for tax incentives and make recommendations for approval. For more information see: <http://www.historycolorado.org/grants/preservation-tax-credits>

Gardening tip: Lilacs not blooming? Causes could be late freeze, pests, root damage or too much shade. Pruning may help. Prune lilacs after May bloom but before flower buds set in early July. The CSU Extension has more info.

President's Corner

Hello Neighbors!

Hope everyone is having a good start to the spring season thus far. Thank you to the ONEN sponsors and everyone who renewed their membership or recently became a new member of this fantastic neighborhood and organization. Thank you also goes out to everyone who participated in the recent Hospital Guidelines meeting and the Meet the Candidates forum.



Your ONEN board of directors has been diligently working on a number of programs that continue to improve the neighborhood one project at a time. In this newsletter, you will read about the Sidewalk Improvement Program, the Tree program, historic preservation, get an update on the ONEN street signs, and learn about our new neighborhood entry signs.

Next on the list of neighborhood improvements are the 'street lights'.

Yes, that's right, street lights! The historic street lights such as those on Tejon St. are the ones that everyone wants installed throughout the entire neighborhood, not just for uniformity and appearance, but also for safety. These lights have been proven to reduce crime and increase property values, and it is time to get these lights installed in the rest of our neighborhood!

Security Note

Speaking of reducing crime, folks, I can't tell you this enough: the days of leaving items unsecured in the car, unlocked doors to the house, open garage doors and gates, are long over. Thieves do target our neighborhood. Secure your property, let your immediate neighbors know when you're on vacation or having work done on your house, arrange to have your mail, packages and newspapers picked up when you are away. Together, we can and will make the difference on crime within our neighborhood.



On a personal note: Thank you to everyone who reached out to me when my beloved dog Charles Wentworth passed away in late January. One of Charlie's favorite pasttimes, was to get a 'dog dish' of ice cream at the Drive In on Weber Street. To honor my boy, I'm providing 50 free 'dog dishes' of ice cream to the first 50 dogs of the Old North End Neighborhood (please one dish per dog). Just mention that your dog lives within ONEN and name any of the past winners of ONEN Dog of the year - Charles Wentworth, Shilo, or Jasper - to get your dog their free dish of ice cream.

Thank you, it's an honor to serve the best neighborhood in Colorado Springs!

Old North End Neighborhood Board of Directors

President

Victor Appugliese • 630-3951

president@oldnorthend.org

Vice President

Bob Sullivan • (843) 364-7530

vicepresident@oldnorthend.org

Colorado College Liaison

Cathy Wilson-O'Donnell

• 635-9740

ccwo1217@yahoo.com

Community Events

Samantha Klingenberg • 635-9666

femesam@aol.com

Historic Preservation

Pat Doyle • 473-8108

patdoyle@mac.com

Lost & Found Pets /

Variance Monitoring

Becky Fuller • 447-1731

beckyfuller@hotmail.com

New Neighbor Welcome

Kyndra Wilson • 473-0440

welcome@oldnorthend.org

Newsletter

Sally Broomfield • 448-0313

broomfields5@msn.com

Penrose Hospital Liaison

Mark Tremmel • 473-4971

mark@tremmeldesign.com

Secretary

Shauna Prince • 635-3986

news@oldnorthend.org

Security

Molly Cassidy • 641-6140

security@oldnorthend.org

Sponsorships

Kady Hommel • 473-8058

kadyh@comcast.net

Treasurer

Terry Darby • 227-0211

treasurer@oldnorthend.org

Tree Program

Linda Buffetti • 630-0836

trees@oldnorthend.org

For a complete list
of ONEN
Board of Directors,
please go to
www.oldnorthend.org,
under
"Who We Are"

The ONEN NEWS is published three times per year by the Old North End Neighborhood Association., P.O. Box 8185, Colorado Springs, CO 80933-8185

Sidewalk Shaving Added to Sidewalk Improvement Program

This year, ONEN continues its highly popular Sidewalk Improvement Program (SIP) with the addition of sidewalk shaving for areas where the panels are in good condition, but a trip hazard exists.



An employee from Precision Concrete Cutting demonstrates sidewalk shaving at 1335 N. Weber in November 2012.

Sidewalk shaving is a quick, clean and cost-effective alternative to replacing sidewalks. A demonstration panel is located at 1338 N. Weber St. Precision Concrete Cutting (safesidewalks.com), which performed the demonstration, will handle the sidewalk shaving. Groninger Concrete, a neighbor-owned business and ONEN

sponsor, will continue providing sidewalk repair and replacement.

Homeowners can nominate sidewalk sections for repair/replacement by sending an e-mail to admin@oldnorthend.org with the subject '2013 ONEN/SIP'. Only sidewalks within ONEN will be considered, with funds allocated based on both severity and order of receipt.

Once a request is approved, ONEN will pay 50% of the cost of repairing a maximum 50 feet of city sidewalk, which does not need to be continuous. More details about the program may be found at oldnorthend.org under the Trees, Streets, Parks tab.

Phone Numbers

Colorado Springs
Police Department
EMERGENCY 911
Non-emergency
444-7000

CSPD Community Relations
444-7410

AskCSPD@SpringsGov.com

CSPD Victim Advocacy Unit
444-7777

CSPD Senior Victim Assistance Team
444-7438

Drug Activity Anonymous Tip Line
444-3111

Crime Stoppers
634-7867

Cheyenne Mountain Security
548-9990

Humane Society
473-1741

Colorado Springs Forestry
385-5942
(pruning median/parkway trees)

Penrose Parking Violation Hotline
776-PARK (7175)

More ONEN Street Signs On The Way

You may have noticed the distinctive black and white ONEN street signs in parts of our neighborhood. The city has now commenced the second phase of installation. By early summer, they will grace every intersection within ONEN (except those with streetlights). Many thanks to our Historic Preservation



Committee for the design and installation coordination of these unifying signs.

10% OFF YOUR PURCHASE

The Mother Daughter Sister Friend boutique at the Penrose Pavilion offers products, support and specialty gifts for all the women in your life who are going through the journey of treatment and recovery from breast cancer, heart disease, or other health conditions. Bring in this coupon to **SAVE 10%** off your purchase.

mdsf
mother daughter sister friend

Penrose Pavilion
2312 N. Nevada Avenue, Suite 225
9 a.m. to 4 p.m., Monday through Friday
719-776-8333

Discount cannot be used on food, beverages, greeting cards, or discounted items. One card per customer, please.



First Lutheran Church
632-8836
www.flccsc.org

james { } media

JamesMediaWorks.com

Dentistry in the Old North End

Doolittle & White

(719) 471-1900
1705 N. Weber St.
www.white-doolittle.com

Historic Preservation Corner

Historic Districts and Preservation Overlays

Clearing the Confusion

Recently we have been asked about the difference between Historic Districts and Historic Preservation Overlays and how they affect homeowners in the Old North End. Let's take a look.

Historic Districts

- Inclusion in a National Register Historic District is strictly honorary and places no restrictions on properties within its boundaries.
- Property owners within historic districts are eligible for a number of benefits, including a 20% state tax credit for rehabilitation projects.
- Historic district designation typically increases residential property values by 5-35% per decade over property values in similar, undesignated areas.
- Historic districts also lead to increased levels of home ownership and longer occupation by homeowners.
- Residents of historic districts tend to have higher rates of participation in neighborhood improvement projects,

which helps to protect shared spaces from decline.

- ONEN boundaries contain all of the North End Historic District, and the northern five blocks of the Weber/Wahsatch Historic District.
- A map of the neighborhood and historic district boundaries can be found at http://oldnorthend.org/?page_id=572.

Historic Preservation Overlay Zoning

- Covers all properties within the boundaries of the North End Historic District.
- If your home is located within the overlay and you plan to make changes to the outside of your house for which a building permit is required, your proposal must be reviewed by the City's Historic Preservation Board.

Historic District designation places no restrictions on property.

- Expedited permits are available for items such as roof replacement, ramps or air conditioners.

- The permit process is not required for

items such as painting, fences less than 6 feet tall, normal maintenance or landscaping.

Please visit the Historic Preservation tab at www.oldnorthend.org for information on the permit process and preservation resources, including the newly added Green Rowhouse Manual, which contains a wealth of information on both historic preservation and energy efficiency.



Published: Sharon Peters, former editor of the *Colorado Springs Gazette*, columnist for *USA Today* and ONEN neighbor, recently published her book, *Trusting Calvin*, the story of how a service dog named Calvin helped heal the emotional wounds of a blind holocaust survivor.

Transportation Survey

To identify safety and mobility concerns on campus, Colorado College has recently been conducting a Transportation Master Plan study. As our neighbor to the south, their transportation plans will impact ONEN neighbors as well. To find out more about the study go to: <http://www.coloradocollege.edu/other/transportationmasterplan/index.dot>

Home Research and Plaque Workshop

Saturday, May, 4, 2013

1:00 p.m. - 4:00 p.m.

Penrose Public Library

20 N. Cascade Avenue

The Adult Meeting Room

P.O.C. Susan Darby 227-0211

sdarbycos@gmail.com



It's Time for Dog of the Year

Does your dog have what it takes to be ONEN's 2013 Dog of the Year? Your dog could be featured in the ONEN newsletter, receive a large bag of treats, have its picture on all outgoing 'ONEN Pet Alerts' and receive 75 lbs of dog food to donate to the charity of the owners choice. If your dog:

- Resides within ONEN
- Loves to play and interacts well with kids & other animals
- Is a good neighbor (no excessive barking /howling, leaving unwanted 'gifts')
- Does not harass or bite people or other animals
- Has done some form of community service within the last year

Please submit a 75 word essay on why your dog should be ONEN Dog of the Year to: pets@oldnorthend.org. Please include a photo with your essay. **Deadline is May 11, 2013.**

Locally Owned Since 1959

BESTWAY

DISPOSAL

Call 633-8709 to receive your reduced Old North End rate.

School Re-Districting

Not just for kids

Recently, Colorado Springs School District 11 decided to close Lincoln Elementary School just to the north of the Old North End. The current redistricting plan would divide our neighborhood, with the children residing in the northern portion of the neighborhood now slated to be bussed to the west side of I-25 via a 30 minute bus ride. After a recent redistricting meeting, concerned neighbors expressed their concerns, which include:

- **Property Values.** Easy accessibility to good neighborhood schools is essential to maintaining property values. Bussing kids out of area is a neighborhood degradation issue.
- **Fair treatment.** Although during a recent meeting, the district expressed concerns about not transporting children from another school across a collector street, our neighborhood children will be bussed across one minor arterial and I-25.
- **Increase in traffic.** Both bussing and individual parents driving kids will add to neighborhood traffic.
- **Responsible financial management.** Bussing kids out of the neighborhood requires an additional bus route at an annual cost of \$15,000.

- **Priority for neighborhood kids.** Although Steele Elementary is at near 100% capacity, one third of those students permit in from outside the school boundary.
- **Health and well-being.** Pedestrian and bicycle accessibility is a defining element of our neighborhood. Walking and riding bikes to school is one of our cherished traditions, and an obvious health benefit. Especially in these days of concern over childhood obesity.



"The decision is not final", said Dave Munger, former ONEN board President and current president of the Council of Neighbors and Organizations (CONO), who noted that CONO will continue to address the issue in April with D11 Schools Superintendent Nicholas Gledich.

To learn more about redistricting, go to: <http://www.d11.org/pages/boundarychanges13.aspx>

If you would like to weigh in with your thoughts, contact Superintendent Nicholas Gledich at nicholasgledich@d11.org or call his office at 719-520-2001.

Thanks to Jeanie Sims who contributed to this article.

 **Mountain High Tree Care & Consulting**
719-444-8800
For all your tree & shrub care needs

- Quality pruning, removals, stump grinding
- Insect & disease controls & sprays

Serving the Northend since 1996.
www.MountainHighTree.com

635-4444

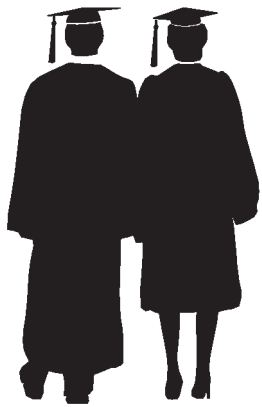
BECKONY
Kitchens & Baths

<http://www.beckony.com>

2013 ONEN Educational Awards

New Education Grant to Non-Traditional Students

Since 2008, ONEN has awarded two \$1000 scholarships to graduating seniors who live in the neighborhood and who plan to attend college after graduation. This year that will change. In addition to one traditional scholarship, ONEN will also offer one \$1000 grant to a non-traditional, post-secondary student who resides in the Old North End Neighborhood. This



one-time grant is available to non-traditional students, continuing or returning students and high school seniors who intend to work toward a 30-unit or more certification,

or a 2 year degree, in an accredited vocational or traditional school.

Recipients will be acknowledged at the ONEN annual meeting on May 22, 2013 and will receive notice prior to the meeting. Award checks will be mailed upon verification of full-time enrollment.

Application instructions may be found at www.oldnorthend.org under the 'Our Neighborhood' Educational Awards tab. All application materials must be postmarked by April 24, 2013. Contact Cathy Mundy at 471-8244.



Old North End neighbor Sam Aker, age eleven, and his instructor Jamie Harrison recently at the Colorado Springs Therapeutic Riding Center at the Mark Reyner Stables in Palmer Park. Sam, who suffers from a rare, terminal, neurological disease, uses Equine-assisted Therapy to ameliorate physical, cognitive, behavioral and emotional challenges. You can read Sam's full story on our blog at www.oldnorthend.org, under the tab Our Neighborhood.

GRONINGER CONCRETE & Landscaping 578-2022
www.groningerconcrete.com

Your Old North End Neighborhood Pediatric Office.
Kids Are Great
 PEDIATRICS
 Robert E. Sayers, M.D., FAAP, Developmental / Behavioral Specialist
 Ann Buell, M.D., FAAP
 Richard Kouri, M.D., FAAP
 Julie Brown, CPNP
 719.577.4200 • 1715 N. Weber St Ste 120
 Across the street from Steele Elementary
www.KidsAreGreatPediatrics.com

Listener Supported Public Radio
KCME 88.7 FM
 Classical Music
Proud to broadcast from and support the Old North End Neighborhood
 719-578-5263 • 1921 N. Weber • Colorado Springs, CO 80907 • www.KCME.org

Dr. Sean O'Donnell
 Family Practice and Sports Medicine
 629 N. Nevada Ave. #110
 719.473.6171
www.seanodonnell.familydoctors.net

THE PATTERSON Group
 REAL ESTATE PROFESSIONALS
 575-1200
PattersonGrp.com
 KEVIN PATTERSON
SOLD

Kevin Patterson continues a 40+ year family legacy of real estate service to the Pikes Peak Region. A leader in residential real estate, Kevin has personally CLOSED over \$100,000,000 in residential sales. Kevin has earned professional recognition such as "Who's Who in Luxury Real Estate", the Million Dollar Guild, The Elite 25 and a Certified Residential Specialist.

ONEN Tree Program

What comes to your mind when you think about our neighborhood? Probably trees are near the top of your list. Along with beautiful homes, trees are often cited as the neighborhood's defining characteristic. They not only add shade to cool our homes in summer, they clean the air we breathe, provide privacy, reduce road noise, prevent erosion and add to the Old North End's reputation for a beautiful canopy.

Free Trees Available

The ONEN Tree Program was developed with the idea of maintaining those priceless benefits. This year fifty (50) trees are available free of charge to ONEN residents to replace lost trees within the neighborhood. Pacific Sunset Maple, Harvest Gold Linden, Swamp White Oak, and Red Oak trees are available. Along with a new tree, planters will receive free mulch plus planting and watering instructions. ONEN will make arrangements to properly plant trees for those neighbors physically unable to do so.

The trees will be delivered on Wednesday April 17th, 2013 to the Forestry Operations Center, 1601 Recreation Way, Colorado Springs, CO, 80905. Planting will commence on Arbor Day Weekend, April 19 – 22, 2013. Volunteers are needed both to unload trees on the 17th and to help plant the following weekend.

To volunteer for this wonderful program, request a tree, or nominate a damaged or destroyed tree in a parkway or area yard for replacement, please contact Linda Buffetti at trees@oldnorthend.org; or 719-630-0836.



Honored: In February, Colorado College Campus Planner George Eckhardt received the 2013 Stephen H. Hart Award for 15 years of historic preservation work on the CC campus. The award, presented by History Colorado, specifically cites Eckhardt's "excellent preservation work at Colorado College." The college is the site of one of the largest repositories of historic buildings in the state. For the complete story go to: <http://www.coloradocollege.edu/newsevents/newsroom/campus-planner-george-eckhardt-receives-historic-preservation-award>

Dave Strawn

Historically Accurate
Windows and Storms
from **MARVIN**
Window and Doors
dave4marvin@comcast.net
719-330-7351



102 N. Cascade Avenue
Colorado Springs, CO 80903
520-1234

www.griffisblessing.com

Enhancing real estate
for investors, owners,
tenants and residents
since 1985

Charlie Paterson

CONSTRUCTION

2620 West Cucharras Street
Colorado Springs, CO 80904

www.cpccs.com
635-5219

Over 1,000 Wines In Stock
Lots A' Liquor
Wine & Spirits
Twenty-Out Door Beer Center
Extensive Selection of Premium
Fine wines Specialty Beers Micro Brews
2308 N. Wasatch Avenue
442-0043
In The Bon Shopping Center

Visit our neighborhood online: www.oldnorthend.org

Find us on
Facebook

The **Old North End Neighborhood NEWS**
P. O. Box 8185
Colorado Springs, CO 80933

*NON-PROFIT
ORGANIZATION
U.S. POSTAGE
PAID
Colorado Springs, CO
Permit No. 54*

Upcoming Events

FMVP Bird Walk with Ken Pals

Tuesday, May 14, 2013
7:30 a.m. – 9:00 a.m.
Intersection of Fontanero and
Monument Valley Park
P.O.C. Meg Kendall 632-9878

ONEN Neighborhood Meeting

Wednesday, May 22, 2013
6:30 p.m. – 8:00 p.m.
Steele Elementary Gazebo

FMVP Wildflower Walk

with **Carey Harrington**
Saturday, June 1, 2013
10:00 a.m.
Intersection of Fontanero and
Monument Valley Park
P.O.C. Cathy Mundy 471-8244

Deadlines:

ONEN Scholarship Application

Due Date: April 24, 2013
P.O.C. Cathy Mundy 471-8244

ONEN Dog of the Year entry

Due Date: May 11, 2013

**Penrose-St. Francis
Health Services**



**Providing health and wellness
classes close to home.**

Visit us at:

www.penrosetfrancis.org