

# Near and Old North End

Neighborhood Transportation Plan

December 7th, 2017

Kathleen Krager





# What did we learn?





# Wood Avenue



## Parking Issues

- Colorado College
- Penrose Hospital



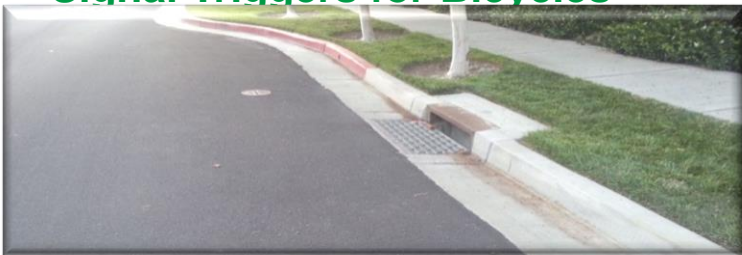
## Speed Issues

- Increase Enforcement
- More Curb Bump Outs
- No Southbound Left Turn onto Uintah St.



## Bike Improvements

- Penrose Hospital to Downtown
- Signal Triggers for Bicycles



## Infrastructure

- Curbs, Gutters and Sidewalks
- Drainage Issues



# Cascade Avenue



## Pedestrian Issues

- Improvements at Colorado College
- Too Many Wide Lanes
- More Pedestrian Infrastructure



## Traffic Operations

- Uintah St.
- Cache La Poudre St.
- Jackson St.
- Synchronized Signal Timing
- Access to I-25
- More Left Turn Lanes
- Aligned Median Openings



## Speed /Noise

## Bicycle Infrastructure



# Tejon Street



## Infrastructure Improvements

- Signage
- Curbs and Gutters
- Markings
- ADA Ramps



## Parking Issues

- Colorado College
- Penrose Hospital



## Speed Issues

- Reduce Cut-Through Traffic

## Bicycle Infrastructure

- Crossing At Uintah St.
- Signal Triggers for Bicycles





# Nevada Avenue



## Pedestrian Improvements

- Crosswalks for Colorado College and Daycare
- Curb Bump-Outs
- Visibility of Crosswalks
- Steele Elementary
- Espanola St.



## Buses

- Empty Buses
- Frequent Stops



## Truck Traffic

- NO TRUCKS!

## Speed /Noise Issues

- Rubberized Asphalt
- Uniform Speed Limit
- Speed Sensors

## Bicycle Infrastructure



# Weber Street



## Pedestrian Improvements

- More Crosswalks
- Finish/Maintain Shook's Run



## Speed /Noise Issues

- More Stops
- Add Median and Roundabouts
- Road Diet

## Bicycle Infrastructure

- Add Bike Lanes



## Infrastructure

- Sight Distance
- Left Turn Lanes
- Painted Curbs
- Better Street Lighting

## Buses

- Move Buses to Wahsatch Ave.



# Wahsatch Avenue



## Traffic Operations/Infrastructure

- Left Turn Arrow at Uintah St.
- Improve Signal Timing
- Better Street Lighting



## Bicycle Infrastructure

- Road Diet
- Connect Shook's Run Trail to Crossing
- Bike Lanes Preferred on Weber

## Buses

- Move Buses to Bon Shopping Center



## Speed/Noise

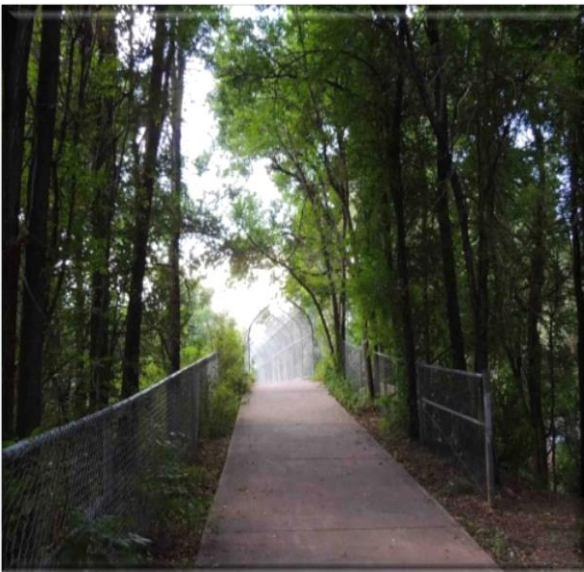


# Uintah Street



## Pedestrian Improvements

- Crossing at Tejon St.
- Shook's Run



## Traffic Operations

- Left Turn Lanes/Arrows Along Corridor
- No Right Turn on Red at Signals
- No Left Turn at Wood Ave.
- Improve Cascade Ave./Uintah St. Intersection





# Fontanero Street



## Speed /Noise Issues

- Lower Speed Limit



## Pedestrian Improvements

- Shook's Run Crossing

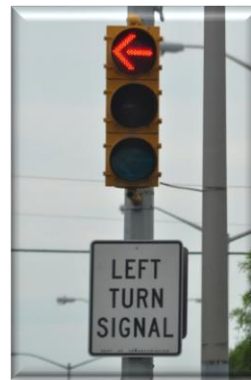


## Bicycle Improvements

- More Bike Friendly
- Signal Triggers for Bicycles

## Traffic Operations

- Right Turn Lane at El Paso St.
- Left Turn Arrow at Nevada Ave.
- Sight Obstructions
- Road Diet
- Curb Bump-Outs
- Signal Progression
- Protected Left Turn Lanes





# MAJOR STRATEGIES



# **Speed and Noise Issues**

## **❖ Special Speed Limits in the Area**

- Arterial Streets – 30 mph
- Local Streets – 25 mph

## **❖ Design to Promote Posted Speed Limit**

## **❖ Noise Ordinance Difficult to Enforce**



# Pedestrian and Bike Issues

## ❖ Pedestrian Safety Criteria

- 4 Lanes – Controlled Crossings
- 2 Lanes – Uncontrolled Crossings

## ❖ Bicycle Infrastructure Criteria

- Continuous Routes
- Controlled Crossings
- Bike Detection at Signals

## ❖ Analysis/Decisions to be Made

- Pedestrian Safety for Colorado College and Surrounding Areas
- Location of Bike Routes
- Specific Projects



# Traffic

## Operations/Infrastructure

### ❖ Staff Study/Concept Design

- Uintah St. – Wahsatch Ave. to Nevada Ave. Left Turn Lanes
- Cascade Ave./Uintah St. Intersection Improvement

### ❖ Median Design Criteria

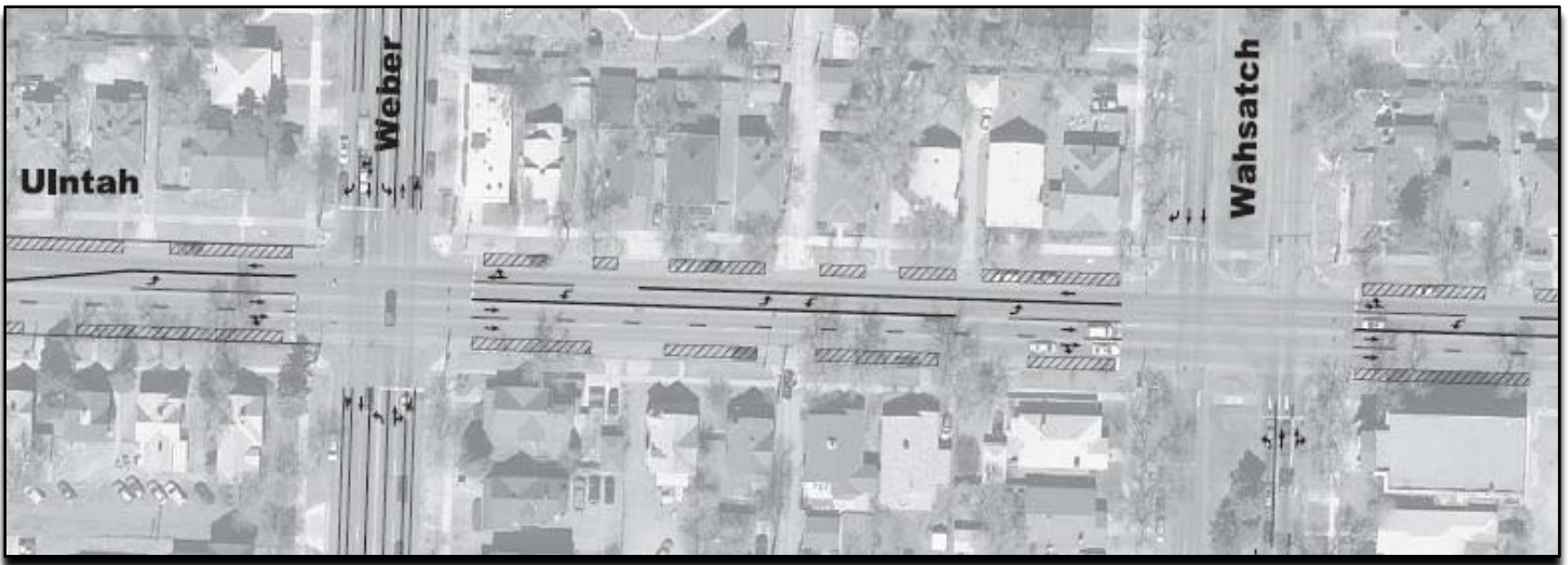
- Medians on Cascade Ave., Nevada Ave., and Wahsatch Ave. are historic.
- Requires Parks Board Approval
- Establish a criteria for considering changes to medians.



# Uintah Street



## Alternative Proposal





# Parking Improvements

## ❖ Specific to Certain Areas

- ❖ Penrose Hospital
- ❖ Colorado College

## ❖ Consider Alternatives Within Those Areas

- Working with Institutions
- Restrict Parking Times
- Parking Permit Program



# Bus Improvements

- ❖ **City Traffic will work with Mountain Metro Transit to determine appropriate bus routes**
- ❖ **Any changes will go through Mountain Metro Transit public involvement process.**



# Commercial Truck Traffic

- ❖ **Remove Restricted Truck Route on Nevada Ave.**
- ❖ **Trucks will need an origin/destination within the neighborhood.**
- ❖ **Closures on I-25 – Trucks will be rerouted to Circle Dr., Fillmore St. or Academy Blvd.**



# Immediate Actions



- **Traffic Improvements on Uintah St.**
- **Changes to truck routes**
- **Changes to Speed Limits**



# Follow-Up



- **Pedestrian Safety**
  - **January 2018**
- **Neighborhood Parking Meetings**
  - **Tim Roberts**
- **Bike Route Locations**
  - **January 2018**
- **Median Change Criteria**
  - **TBD**
- **Bus Route Analysis**
  - **Mountain Metro/Traffic Engineering Staff**



# QUESTIONS

?

# COMMENTS

?

